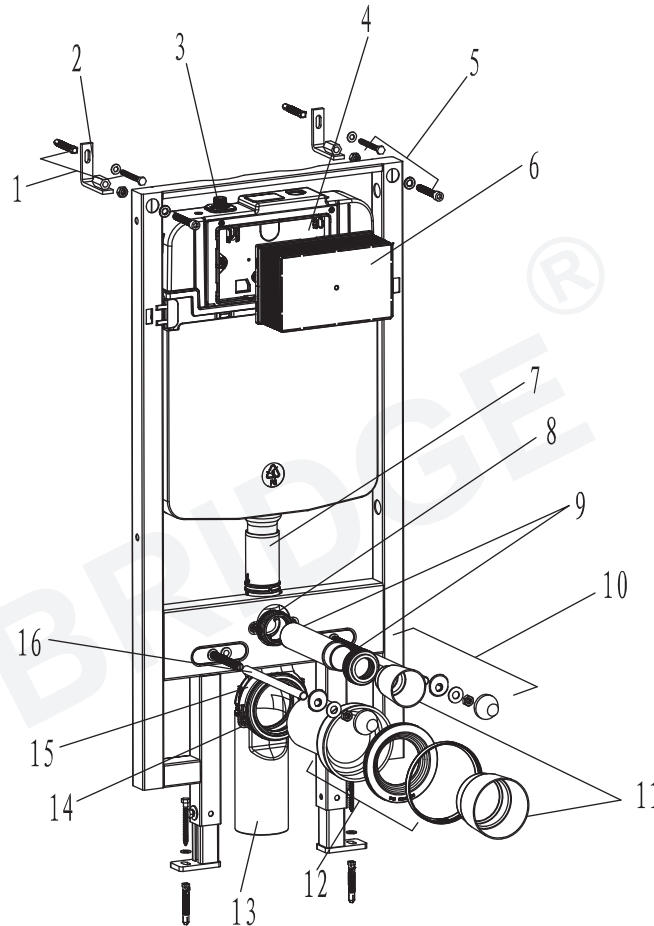


INSTALLATION MANUAL

WOODBIDGE®

WATER TANK AND MOUNTING FRAME: WHT001



Parts description and function

No.	Description	Qty	Function
1	Expansion screw	4	Fixation of frame
2	Wall bracket	2	
3	Angle valve	1	Fill valve inlet and shut-off
4	Cistern cover	1	Mounting of locking bracket
5	Socket head screw	2	Mounting of frame and locking into wall bracket
6	Plastic holder	1	To reserve space for installation of actuator at wall building
7	Connecting tube	1	Water inlet to ceramic bowl
8	Fixing screws	2	To fix connecting tube
9	Flushing piping	1	To joint cistern into ceramic bowl(cutting in accordance with wall thickness)
10	Connecting screw	2	To mount ceramic bowl
11	Piping stopper	2	To reserve space for flushing piping at wall building To reserve space for discharging piping at wall building
12	Connecting pipe	1	To joint drain pipe into ceramic bowl (cutting in accordance with wall thickness)
13	Draining syphon	1	To discharge liquid and solid waste from ceramic bowl
14	Mounting bracket	1	To mount draining syphon
15	Draining syphon holder	1	
16	Protective cover	2	To protect connecting screw at wall building

Customer Service Phone: 562-229-0088. (Monday - Friday 9 AM - 5 PM Pacific Time)

Or Email: help@woodbridgebath.com

www.woodbridgebath.com

20211112 REV. 1

Important notices:

1. Please adhere to the following installation instructions. We shall not be responsible for failures and loss that are contributed to improper installation.
2. Please confirm the fixation location of frame prior to installation and obtain the finished floor surface. Draw FFL on installation wall and follow it as baseline from ZERO (0) level.
3. The instructions have been composed based on the latest product specifications. We reserve the right to make modifications to the packaging and specifications without any prior notice.

NOTES:

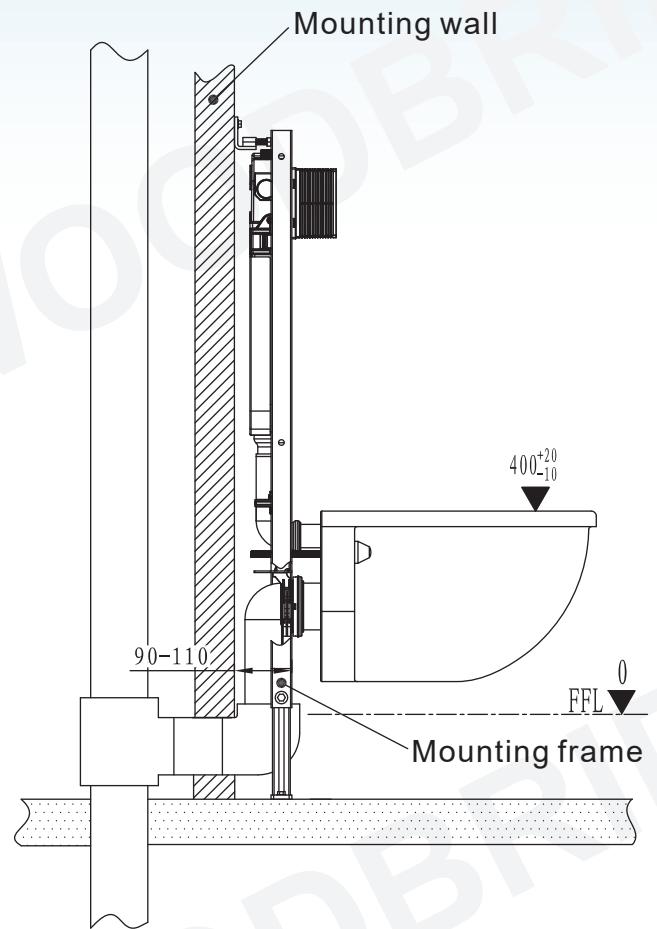
1. Mount before bricks building.
2. All unit size in mm(metric).
3. Follow the actual product, should there be an unconformity with drawing.

⚠ FFL ∇ 0 = FINISHED FLOOR

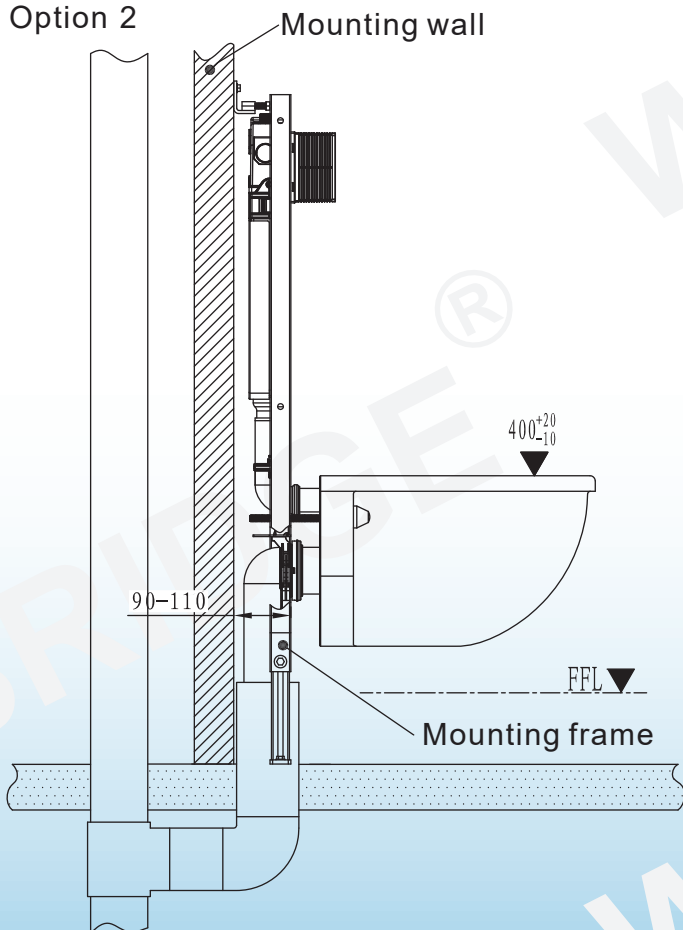
1、 Drainage System Layout

Drawing 1 to 3 are three different installation systems for drain pipe. Customer should confirm whichever installation system according to drainage outlet position. If drainage outlet does not fall within the three systems, customer should follow one of the three drainage system layout to correspond installation of our concealed cistern.

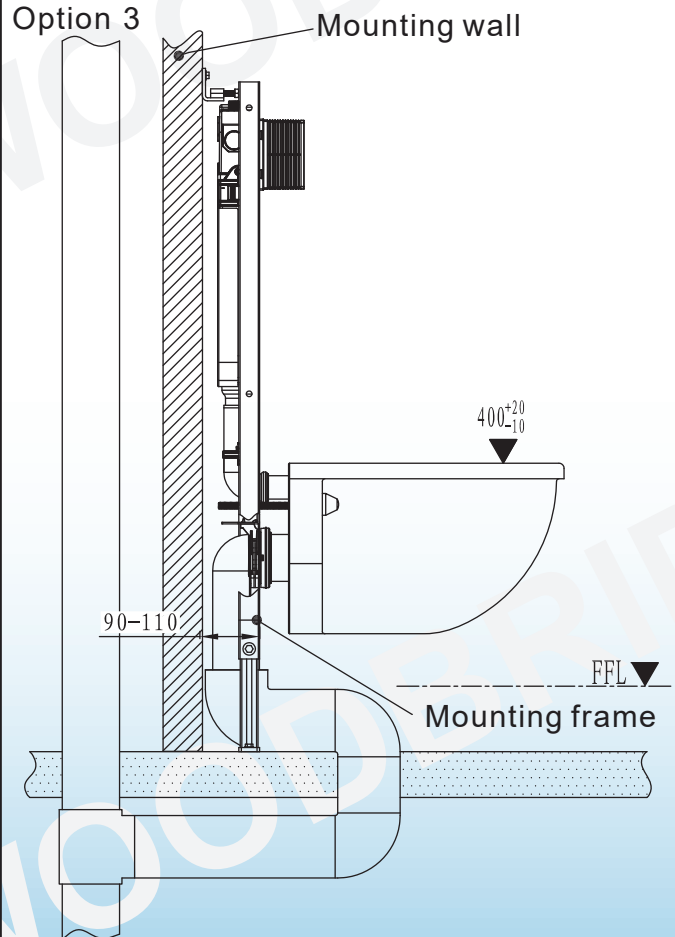
Option 1



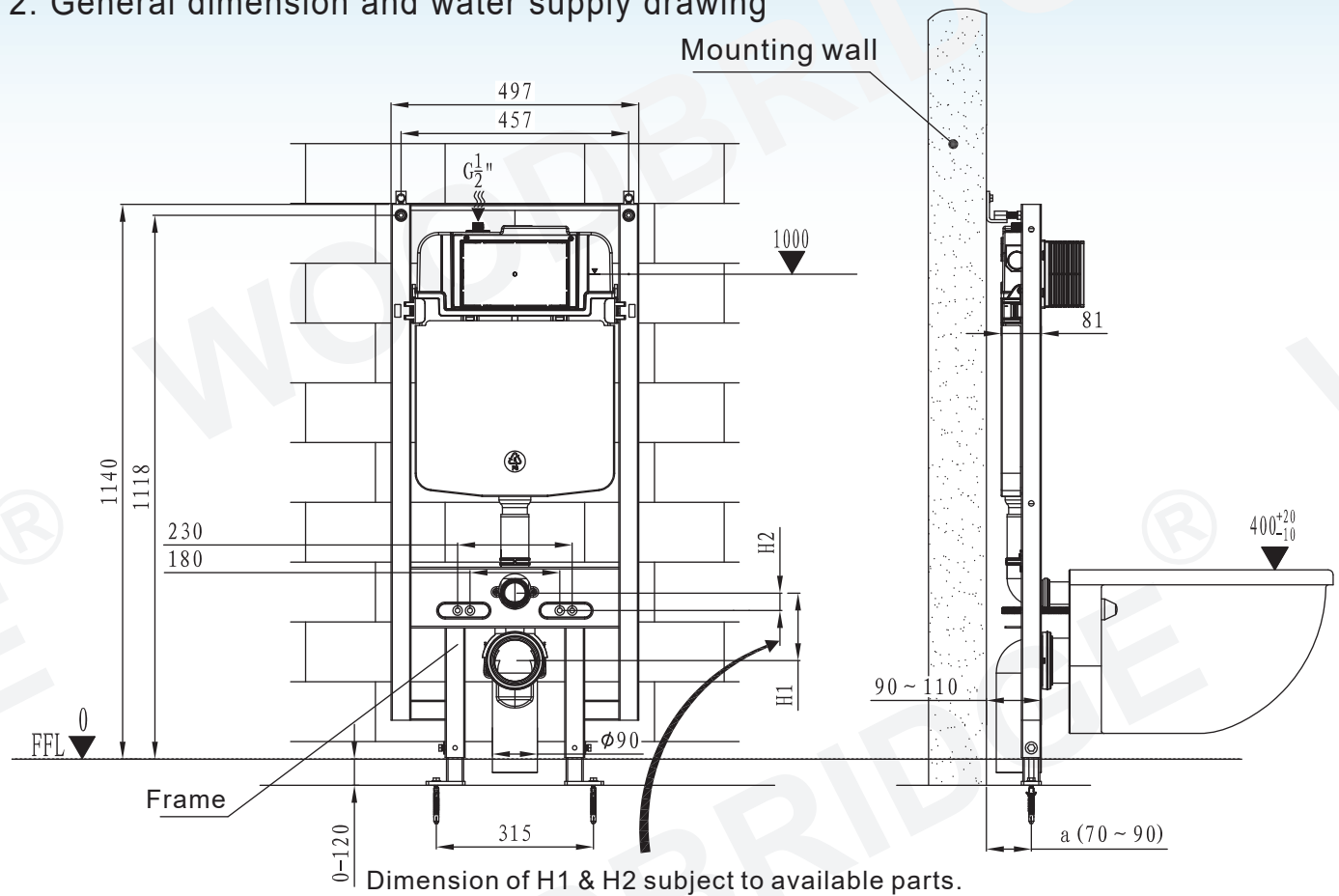
Option 2



Option 3

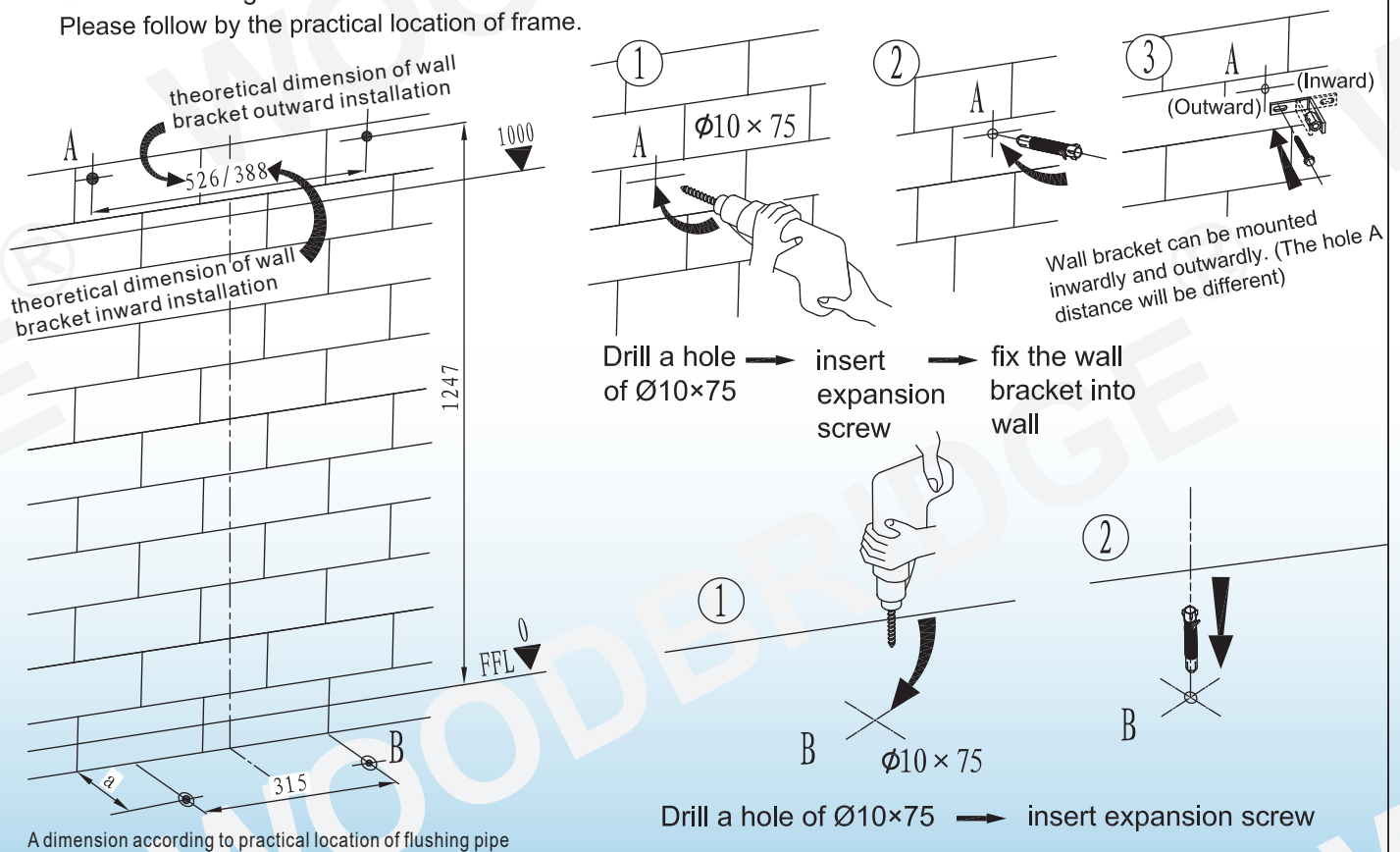


2. General dimension and water supply drawing

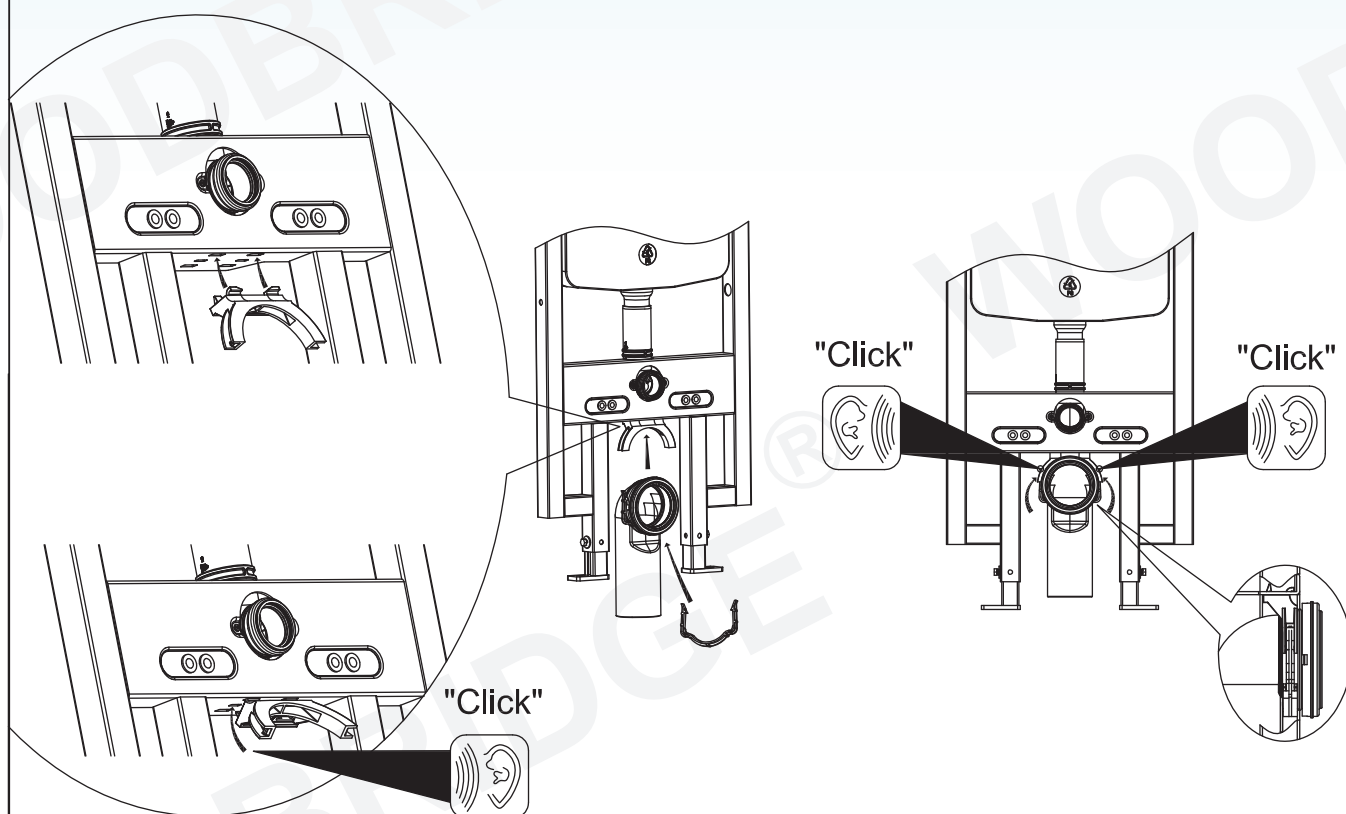


3. Drill the holes and insert the expansion bolt

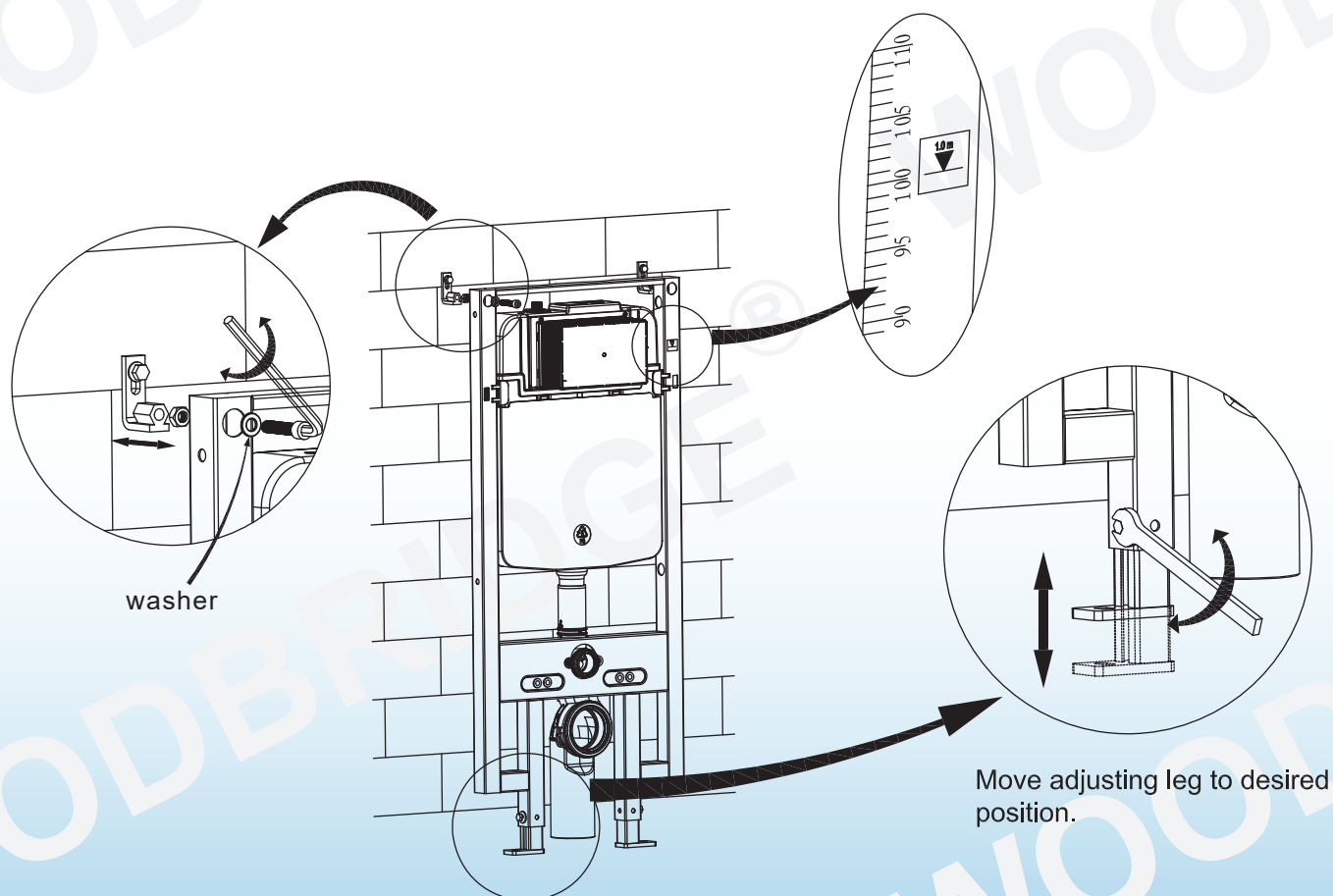
☆ Below drillings are theoretical dimensions of frame mounting.
Please follow by the practical location of frame.



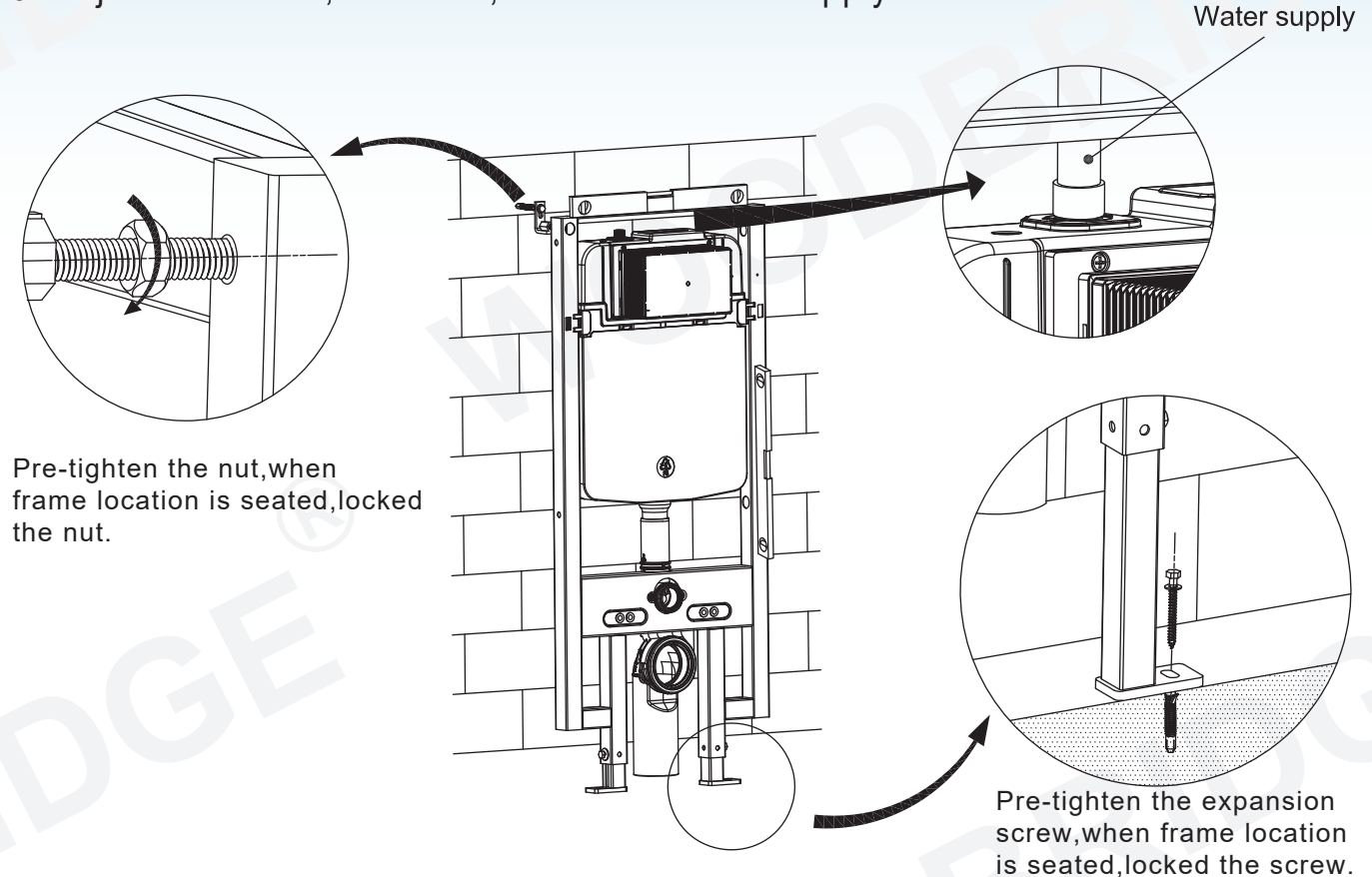
4. Installation of draining siphon



5. Adjustment of socket head screw and floor fixing accessories

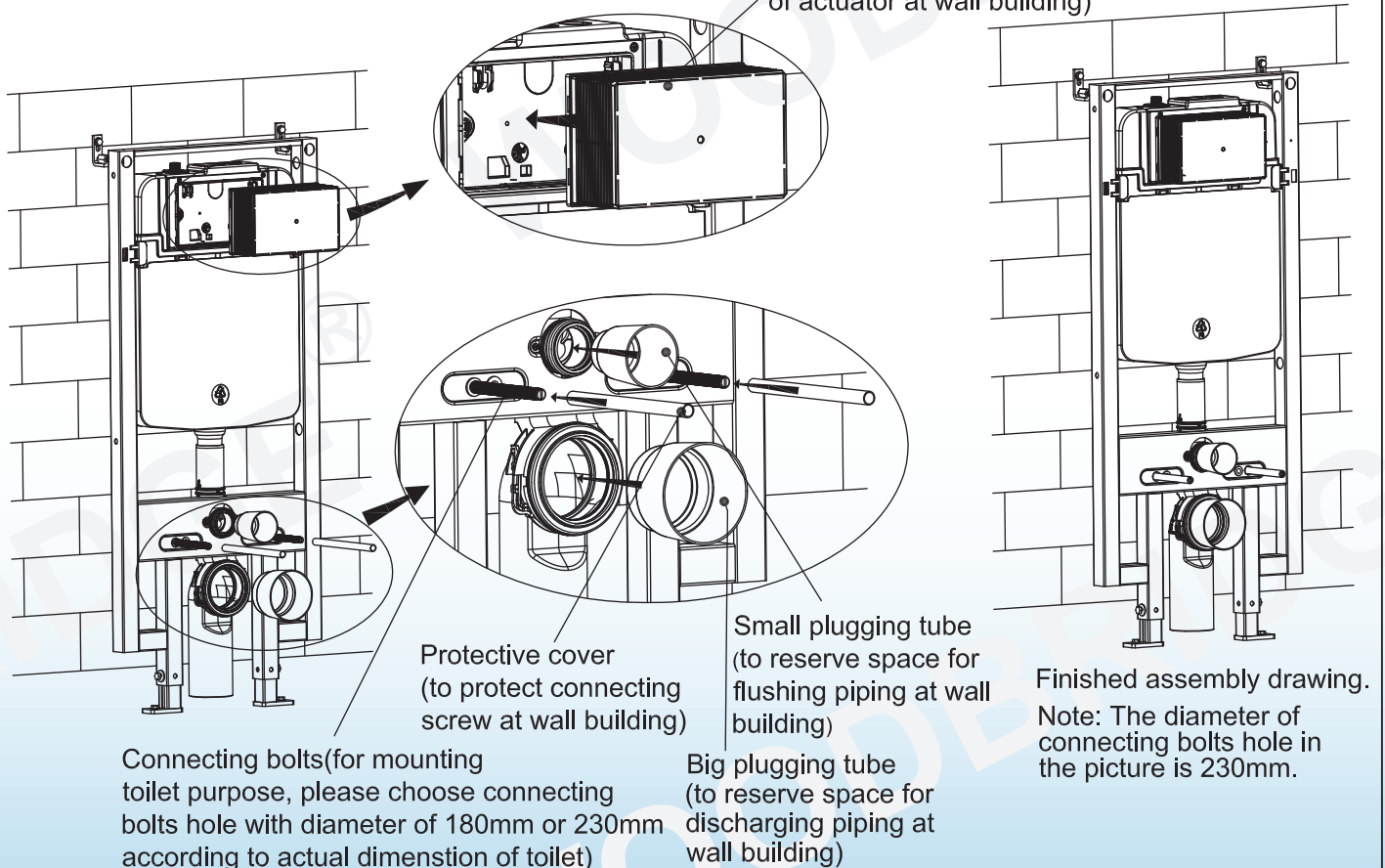


6. Adjust the frame, then fix it, and install water supply



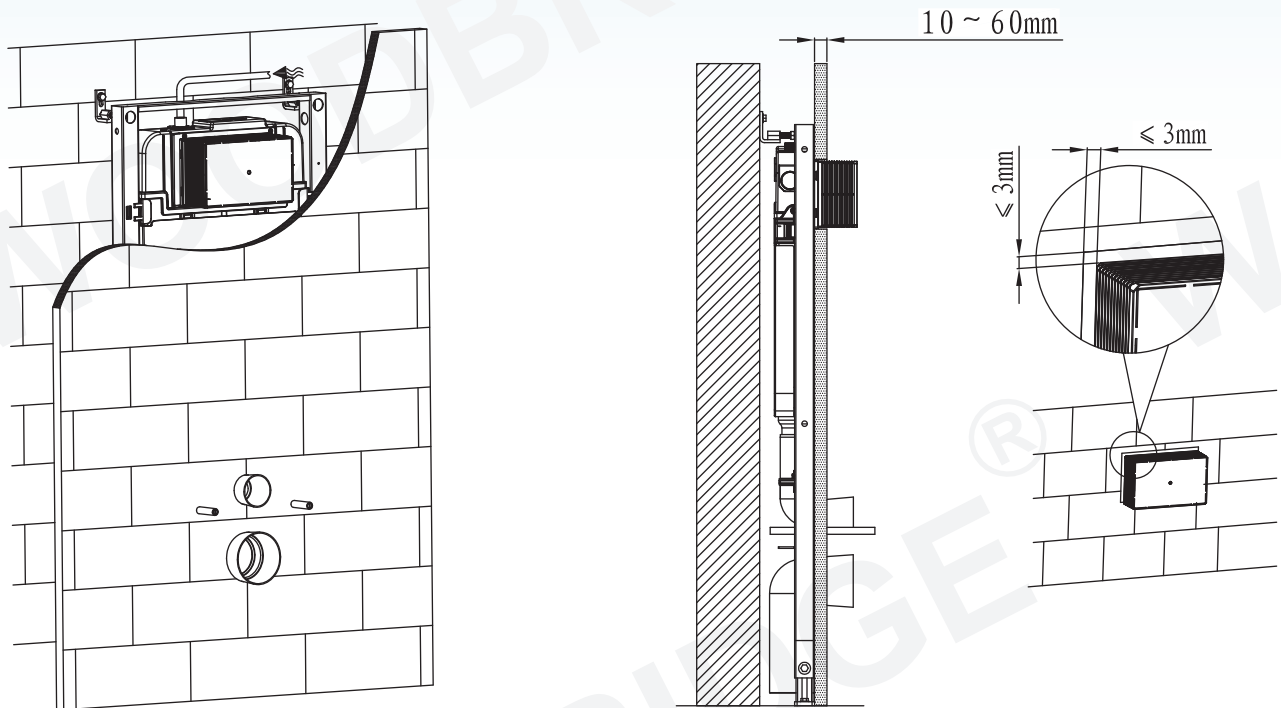
7. Mounting of installation accessories

Plastic holder (to reserve space for installation of actuator at wall building)



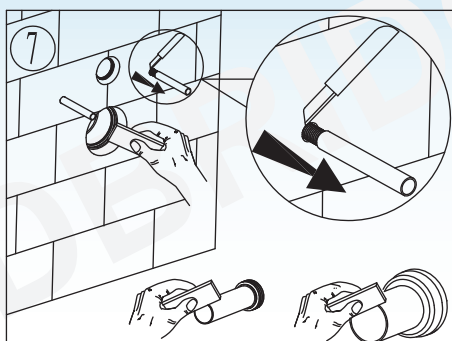
Note: Choose connecting bolts hole with diameter of 180mm or 230mm according to actual dimension of toilet.

8. Wall thickness ranges between 10~60mm
(from the outer surface to cistern to the finished wall)

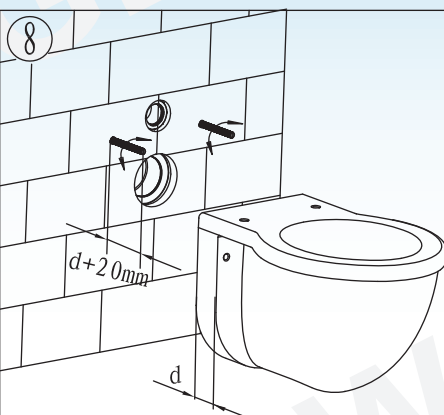


9. Mounting of ceramic bowl

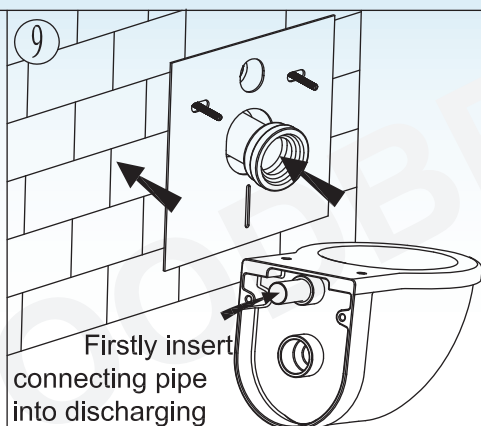
<p>①</p> <p>Fully insert the straight tube into cistern flushing outlet and connecting pipe into discharging outlet.</p>	<p>②</p> <p>Draw the lines as above picture.</p>	<p>③</p> <p>Apply lubricant on rubber washers of straight tube and connecting pipe, then insert into ceramic holes.</p>
<p>④</p> <p>Draw the lines as above picture.</p>	<p>⑤</p> <p>As per drawing, L1 is distance between the two lines on straight tube. L2 is distance between the two lines on connecting pipe. Cut the straight tube and connecting pipe as per above drawing.</p>	<p>⑥</p> <p>Polishing the cutting surface to get chamfer angle as per drawing and deburring.</p>



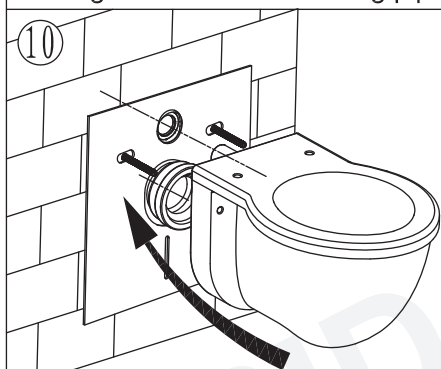
Cut the protection sleeve outside of the wall with a utility knife.
Apply lubricant on joint surface of straight tube and connecting pipe.



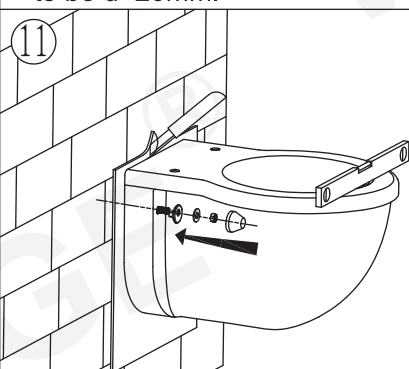
Adjust length of connecting bolt to be $d+20\text{mm}$.



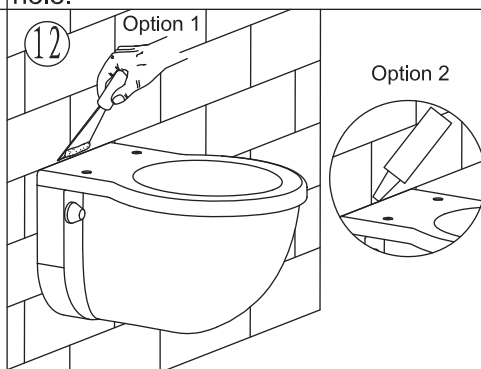
Firstly insert connecting pipe into discharging outlet and straight tube into ceramic hole.



Mount the ceramic bowl.



Secure and tighten the bowl, then remove the extra pad.

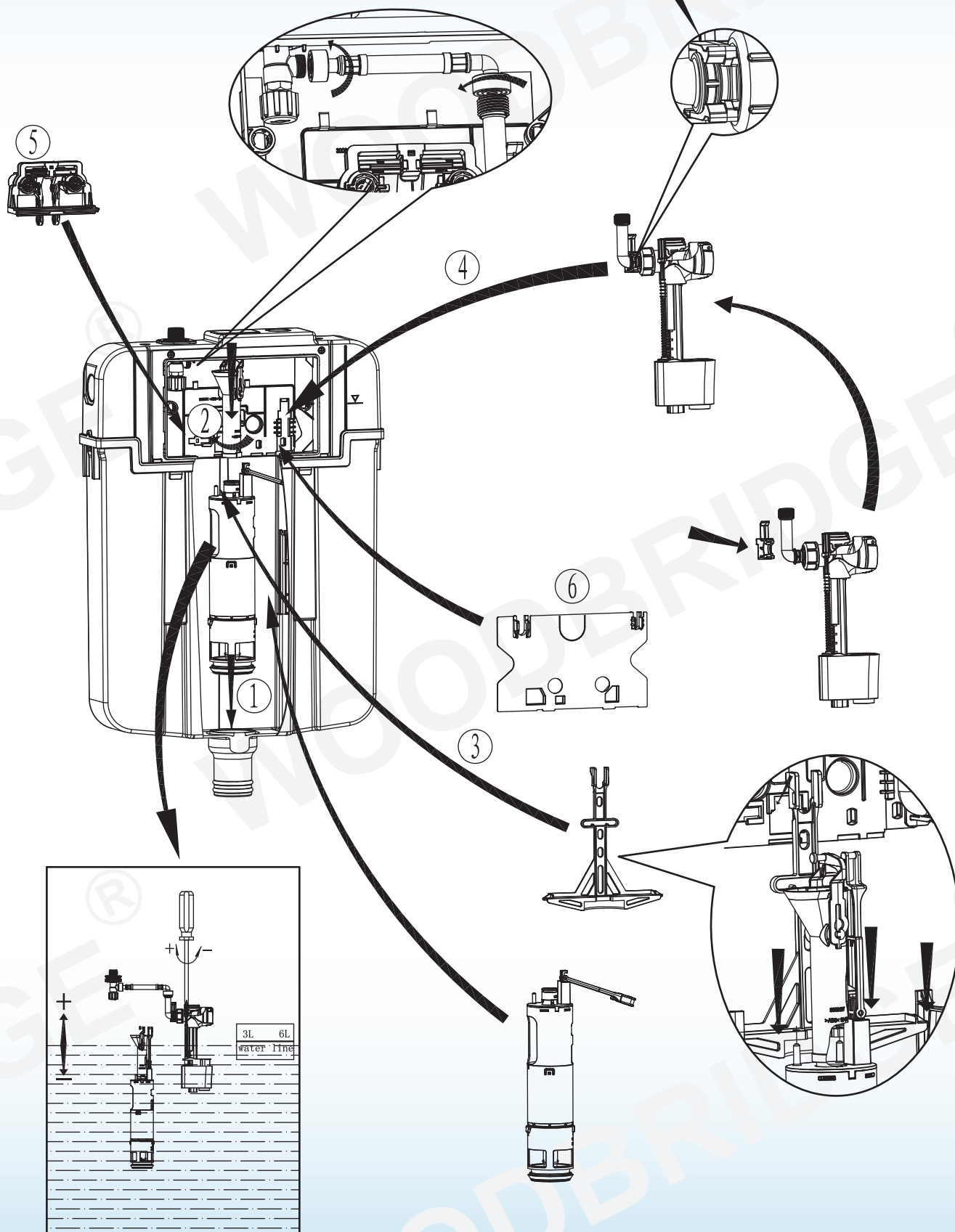


Filled the gap with white cement or silicone caulking.

WOODBIDGE®

10. Internal flushing mechanism assembly drawing:

"Click"



Thank you for using WoodBridge products!

Customer Service Phone: 562-229-0088. (Monday - Friday 9 AM - 5 PM Pacific Time)

Or Email: help@woodbridgebath.com

www.woodbridgebath.com



SCAN ME